

# Product Catalogue





Appearance | Durability | Low  
Maintenance | Dimensional Stability |  
Environmentally Friendly |  
Versatility | Termite Resistance | Cost-  
Effective



# LUDEFLOOR SERIES

**LUDEFLOOR** is perfect for both exterior and interior decking applications, including patios, walkways, poolside areas, and more. Designed with versatility in mind, **LUDEFLOOR** offers a variety of styles, textures, and finishes, allowing you to create the perfect look and ambiance for any space. Combining durability with aesthetic appeal, **LUDEFLOOR** ensures a long-lasting, stylish solution for all your decking needs.

---





## **LUDEFLOOR 4"**

Dimension: W 100mm X L

2400mm X T 20mm

Weight (Est): 8.85 Kg / pcs

Price: Rp 135.000 / pcs



## **LUDEFLOOR 8"**

Dimension: W 200mm X L

2400mm X T 20mm

Weight (Est): 17.70 Kg / pcs

Price: Rp 270.000 / pcs



## **LUDEFLOOR 12"**

Dimension: W 300mm X L

2400mm X T 20mm

Weight (Est): 25.10 Kg / pcs

Price: Rp 370.000 / pcs



## LUDEWALL SERIES

LUDEWALL provides a combination of durability, aesthetic appeal, and low maintenance, making them a great choice for various wall cladding or facade needs.

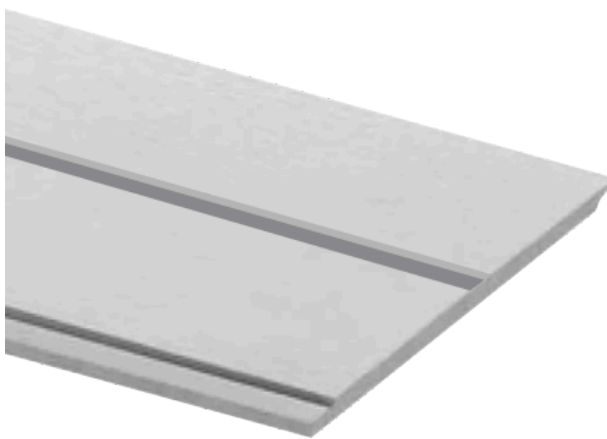


## Wood Texture

Dimension: W 150mm X L  
2400mm X T 10mm

Weight (Est): 6.64 Kg / pcs

Price: Rp 96.000 / pcs



## Wood Grain

Dimension: W 200mm X L  
2400mm X T 10mm

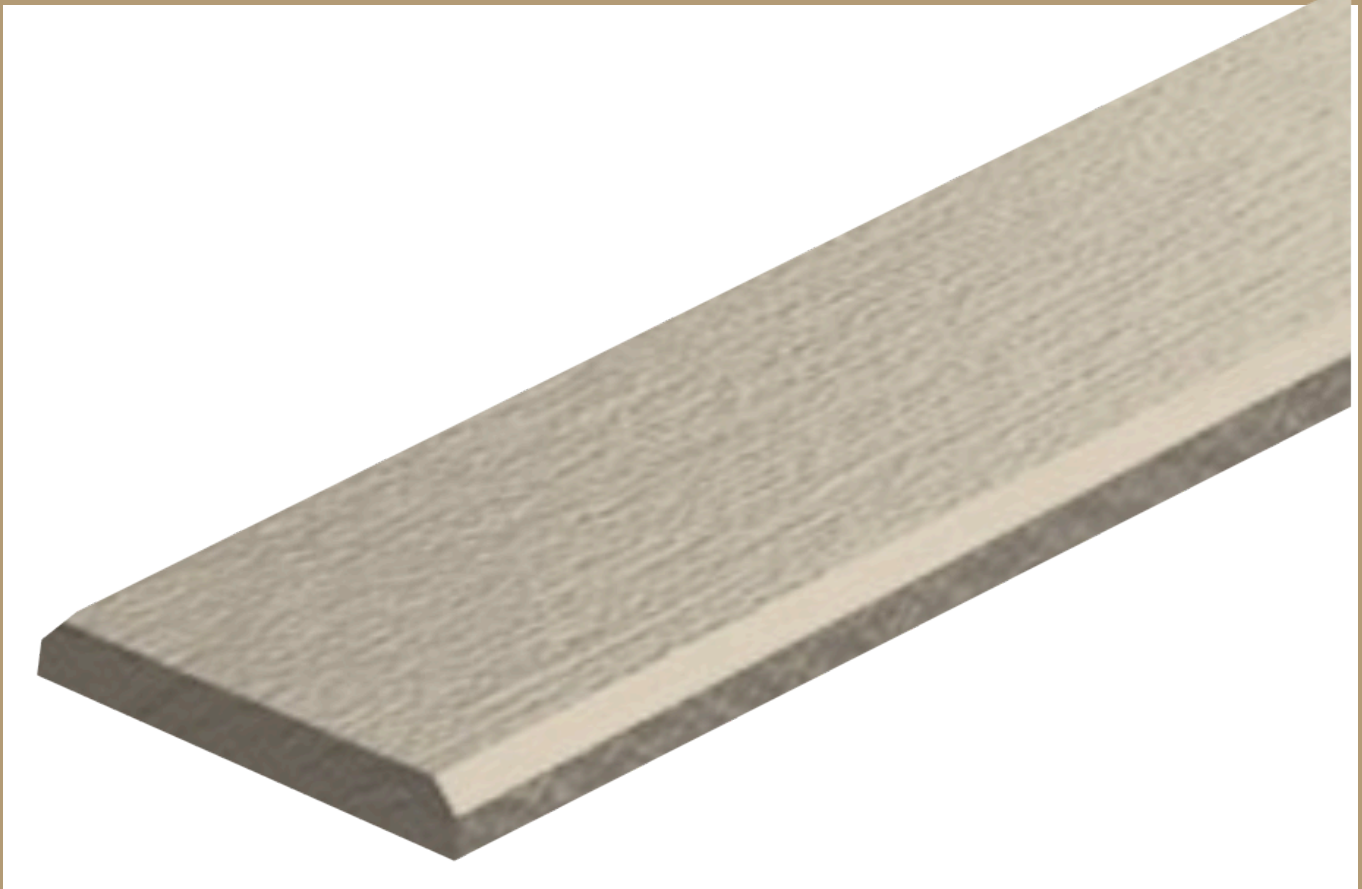
Weight (Est): 8.85 Kg / pcs

Price: Rp 105.000 / pcs



## LUDECEILING

**LUDECEILING** offers an opportunity to enhance a room's design and functionality. Whether you prefer classic elegance or modern minimalism, there's always a ceiling style to match your taste and need. With our durability and moisture resistance, **LUDECEILING** is not only stylish but also has the strength to match.



## LUDECEILING 4"

### **10mm Variant**

Dimension: W 100mm X L 2400mm X T 10mm

Weight (Est): 4.43 Kg / pcs

Price: Rp 60.000 / pcs

### **8mm Variant**

Dimension: W 90mm X L 2400mm X T 8mm

Weight (Est): 3.54 Kg / pcs

Price: Rp 42.000 / pcs



# LUDEPLANK

**LUDEPLANK** features premium fiber cement planks designed to replicate the natural beauty of wood while offering superior durability and versatility. Perfect for both interior and exterior applications, **LUDEPLANK** provides a stylish, low-maintenance solution for wall cladding, ceilings, and decorative accents. **LUDEPLANK** seamlessly blends aesthetic appeal with long-lasting performance, making it the ideal choice for enhancing any architectural style. Resistant to weather, fire, and pests, **LUDEPLANK** ensures your spaces remain beautiful and protected for years to come.





## LUDEPLANK 1"

Dimension: W 100mm X L  
2400mm X T 20mm

Weight (Est): 8.85 Kg / pcs

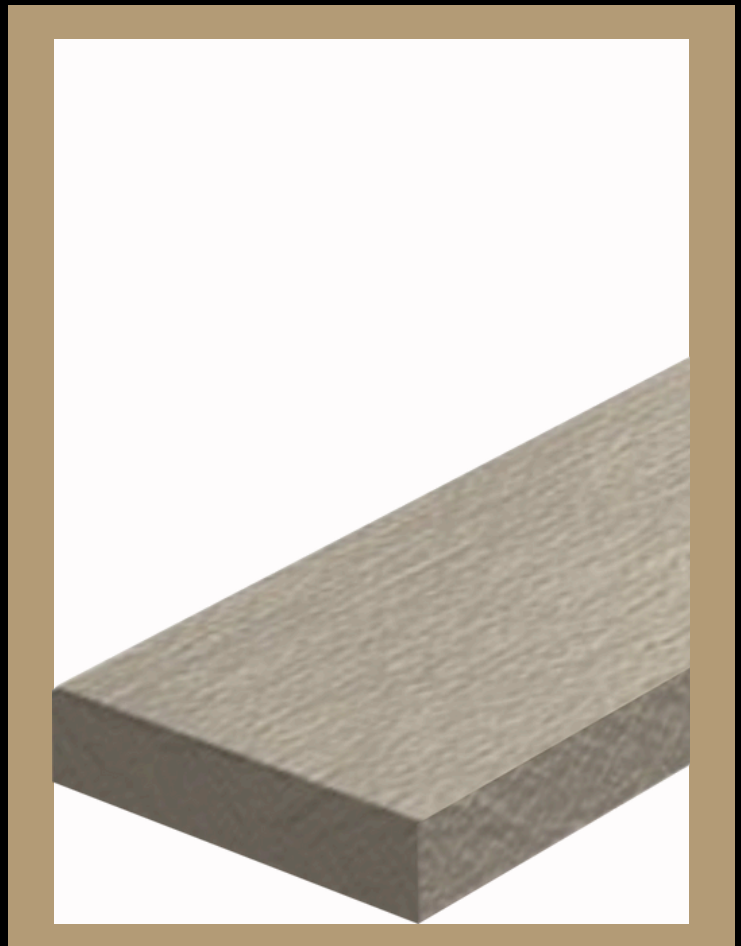
Price: Rp 100.000 / pcs

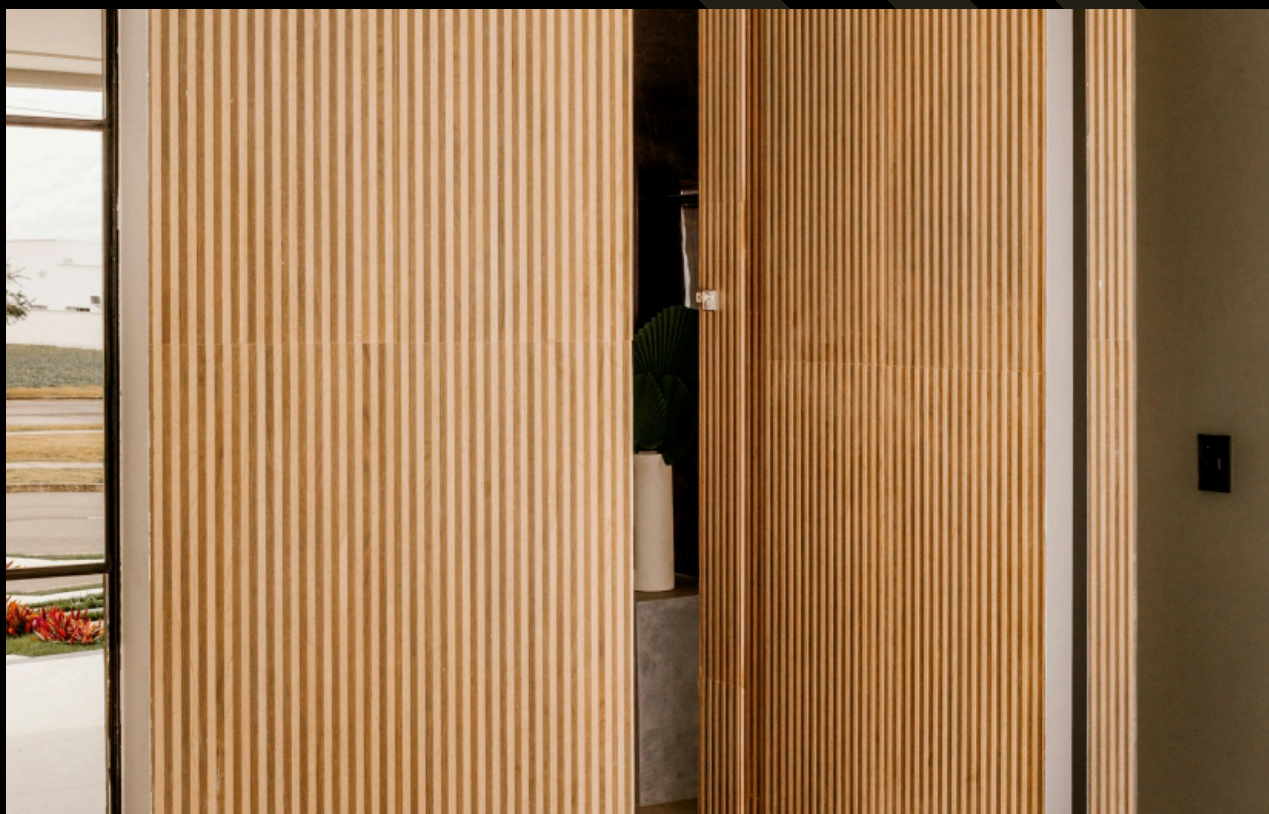
## LUDEPLANK 2"

Dimension: W 50mm X  
L 2400mm X T 20mm

Weight (Est): 4.43 Kg /  
pcs

Price: Rp 50.000 / pcs





## Property Items Value of Test Standard

Property Items	Value of Test	Standard
<i>Tolerance of Thickness:</i>		
$\leq 10 \text{ mm}$	$\pm 0.5 \text{ mm}$	ISO 8336 ; 2009
$> 10 \text{ mm}$	$\pm 5\%$	ISO 8336 ; 2009
<i>Tolerance of Length</i>	$+ 0 ; -2 \text{ mm}$	ISO 8336 ; 2009
<i>Tolerance of Width</i>	$+ 0 ; -2 \text{ mm}$	ISO 8336 ; 2009
<i>Tolerance of Squareness</i>	$\leq 3 \text{ mm}$	ISO 8336 ; 2009
<i>Tolerance of Straightness</i>	$\leq 1.5 \text{ mm}$	ISO 8336 ; 2009
<i>Density</i>	$1.55 \text{ gr/cm}^3$	ISO 8336 ; 2009
<i>Modulus of Rupture</i>	$180 \text{ kg/cm}^2$	ISO 8336 ; 2009
<i>Water Absorption</i>	23%	ASTM C1186
<i>Water Content</i>	6-9 %	ASTM C1186
<i>Non combustible</i>	Pass	BS 476 Part 4:1970

# Ludeco

## Application Details

### **Frames**

LUDECO Products could also be applied on metal frame such as: galvanized steel, metal furring, and another type of metal frame which has thickness 0.4 mm – 1.2 mm. The right method of frame installation is crucial in supporting the result of Ludeco Panel application

### **Screws Position**

The minimum distance between nails or screws with the corner of Ludeco Panel is 50 mm. The minimum distance between nails or screws with the edge of Ludeco Panel is 12 mm. The Maximum distance between nails and screws is not more than 200 mm (on the side of Panel)

### **Jointing**

For Interior Application, can use flush joint system. For Exterior Application, joint between Decorative panels could apply open Joint system or flexible joint (Applying sealant to get the best result. It is recommended to allow similar gap for each joints). It is recommended to allow gap about  $\pm 10$  mm between the panel on exterior application. For any joint that Flexible joint system, is recommended to apply sealant that contains of Polyurethane or sealant which has high elasticity, resistant to weather, high performance adhesive and paintable

### **Finishing**

For Finishing on decorative panels could apply with water base paint.